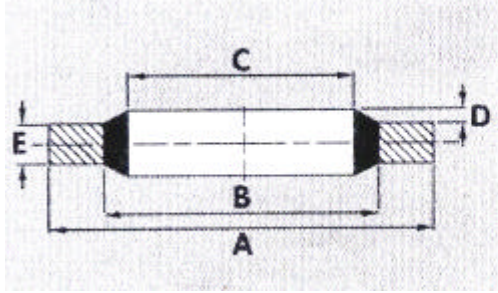
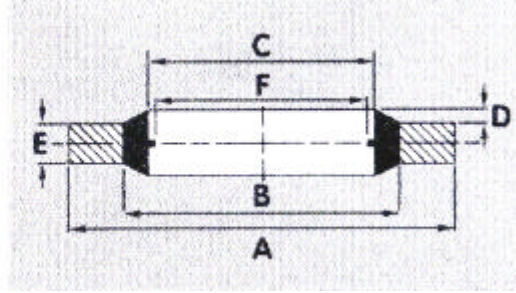


IMPERIAL BONDED SEALS

STANDARD



SELF-CENTRALISING



REFERENCE		ALT. REF.	SIZE		A	B	C	D	E	F	
STANDARD	SELF-CEN-TRALISING		BSP	BOLT	+0.13 -0.00	+0.10 -0.10	+0.10 -0.10	+0.25 -0.00	+0.10 -0.00	+0.20 -0.20	
001	-	PP45-1	-	6BA	6.35	4.09	3.05	0.20/ 0.45	1.22	-	
002	-	PP45-2	-	4BA	7.26	5.26	4.12			-	
003	-	PP45-3	-	2BA	8.38	6.35	5.21			-	
004	-	PP45-4	-	1/4	13.21	8.00	6.86			-	
005	-	PP45-5	-	1/4	13.34	9.53	6.99			-	
006	-	PP45-6	-	5/16	13.34	9.53	8.31			-	
007	-	PP45-7	-	5/16	14.22	10.04	8.64			-	
020	820	PP45-A	1/8	3/8	15.88	11.84	10.37	0.25/ 0.51	2.03	8.56	
008	-	PP45-8	-	0.4	18.36	12.45	11.36			-	
009	-	PP45-9	-	7/16	19.05	13.08	11.69			-	
021	821	PP45-B	1/4	1/2	20.57	15.21	13.74			11.45	
010	-	PP45-10	-	9/16	22.23	16.39	14.86			-	
022	-	PP45-BB	-	0.6	22.23	17.30	15.83			-	
011	-	PP45-11	-	5/8	25.40	18.75	16.51			-	
023	823	PP45-C	3/8	-	23.80	18.75	17.28			14.96	
012	-	PP45-12	-	11/16	25.40	19.69	18.16			-	
024	-	PP45-CC	-	3/4	26.92	21.21	19.69			-	
025	825	PP45-D	1/2	13/16	28.58	23.01	21.54	18.64			
026	826	PP45-E	5/8	7/8	31.75	24.97	23.49	20.60			
013	-	PP45-13	-	15/16	33.27	26.04	24.26	0.25/ 0.51	2.49	-	
027	827	PP45-F	3/4	1.0	34.93	28.53	27.05			24.13	
028	-	PP45-FF	-	1.1/16	38.61	30.61	27.82			-	
014	-	PP45-14	-	1.1/8	36.58	30.86	29.33			-	
031	831	PP45-HH	1.0	1.5/16	42.80	36.88	33.89			3.2	
029	829	PP45-G	7/8	1.3/16	38.10	32.29	30.81			27.89	
015	-	PP45-15	-	1.1/4	41.40	35.69	32.64			3.38	-
030	830	PP45-H	1.0	1.5/16	42.80	36.88	33.89			2.50	30.30
016	-	PP45-16	-	1.3/8	44.45	38.99	35.94			3.38	-
017	-	PP45-17	-	1.1/2	47.75	42.04	38.96			-	-
032	832	PP45-J	1.1/4	1.5/8	52.38	45.93	42.93	0.25/ 0.51	2.50	38.96	
018	-	PP45-18	-	1.3/4	57.15	48.39	45.34	3.38	-		
033	833	PP45-K	1.1/2	1.7/8	58.60	51.39	48.44	2.50	44.86		
019	-	PP45-19	-	2.0	63.50	54.74	51.69	3.38	-		
034	834	PP45-L	1.3/4	2.1/8	69.85	58.30	54.89	-	50.80		
036	836	PP45-M	2.0	-	73.03	63.63	60.58	2.50	56.67		
037	-	PP45-MM	-	2.1/2	77.72	67.44	64.39	3.38	-		
038	-	PP45-N	2.1/4	-	79.50	69.98	66.68		-		
039	-	PP45-P	2.1/2	-	90.17	79.38	76.08		-		
079	-	-	3.0	-	101.47	92.84	89.09		-		

All dimension in mm. checking availability of seals with sales before ordering.